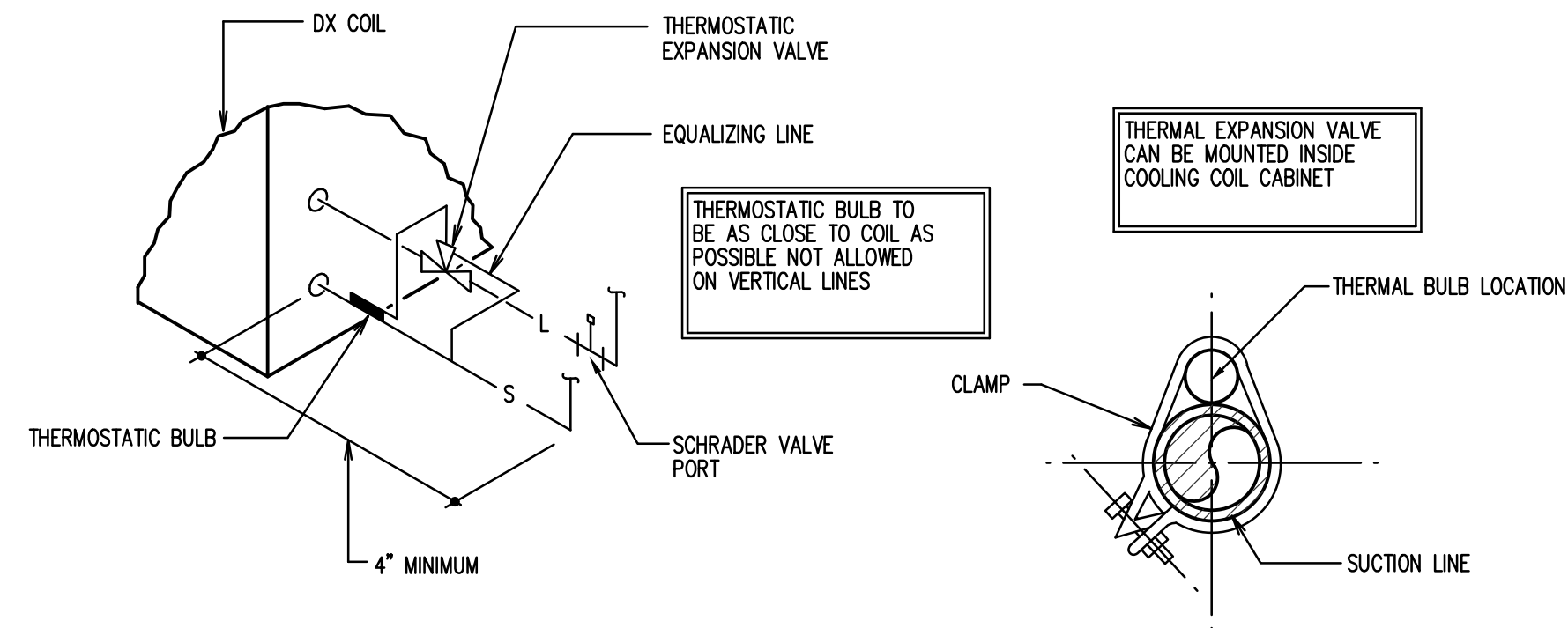


A TYPICAL REFRIGERANT SCHEME
SCALE: NONE

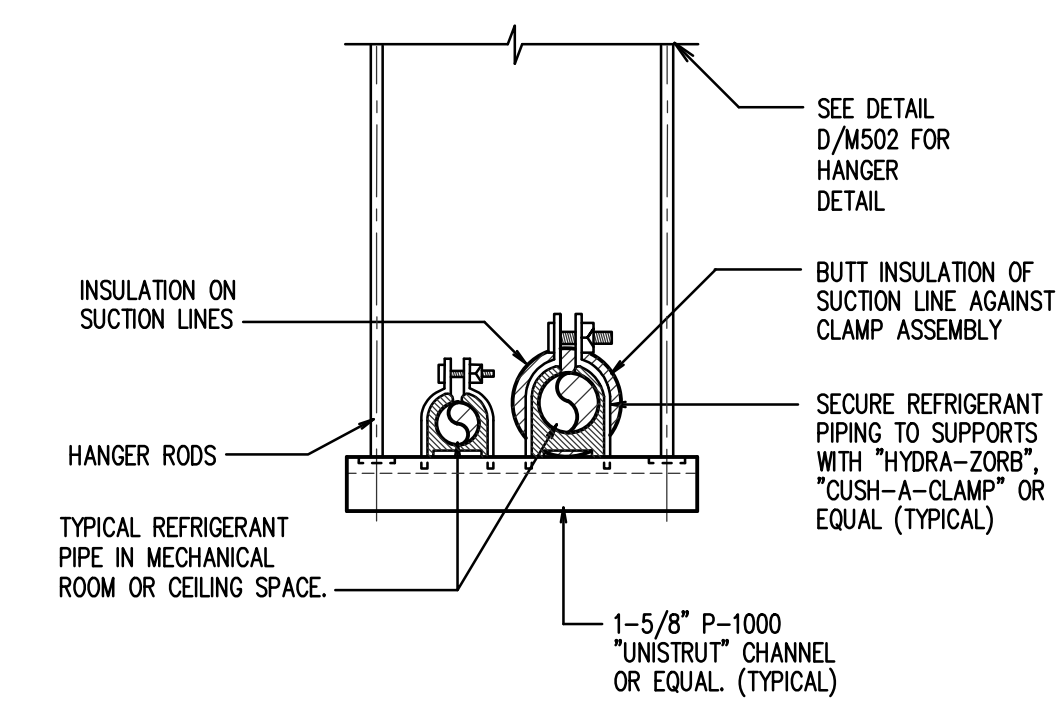
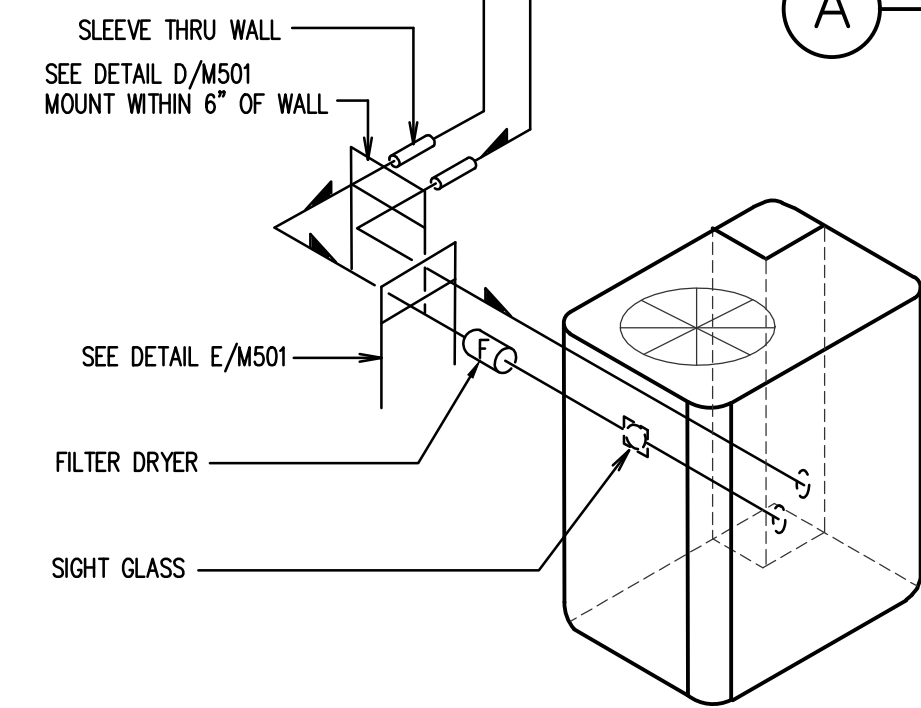


B REFRIGERANT COIL CONNECTION DETAIL
SCALE: NONE

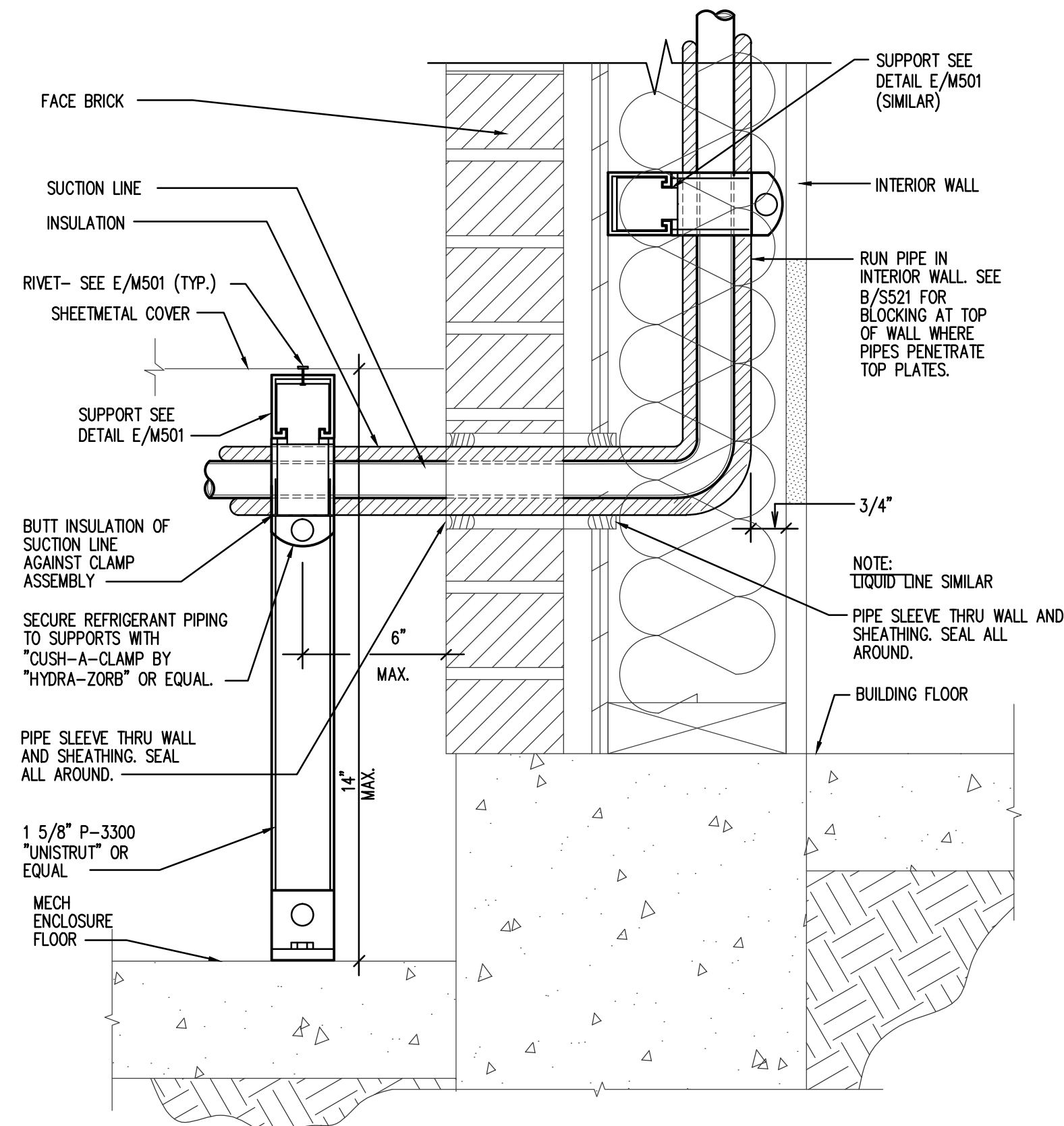
REFRIGERANT PIPING LEGEND	
SYMBOL	DESCRIPTION
	EXPANSION VALVE. SEE DETAIL B/M501
	MOISTURE INDICATING SIGHT GLASS
	FLEXIBLE CONNECTION
	FILTER DRIER
	PIPE SUPPORT. SEE DETAIL C/M501
	EXTERIOR PIPE SUPPORT. SEE DETAILS D/M501 AND E/M501
	DIRECTION OF SLOPE DOWN
	SUCTION LINE
	LIQUID LINE
	SCHRADER VALVE PORT

REFRIGERANT LINE SIZES		
SYSTEM SIZE	LIQUID	SUCTION
2.0 TON	3/8"	3/4"
2.5 TON	3/8"	3/4"
3.0 TON	3/8"	7/8"
3.5 TON	3/8"	7/8"
4.0 TON	3/8"	7/8"

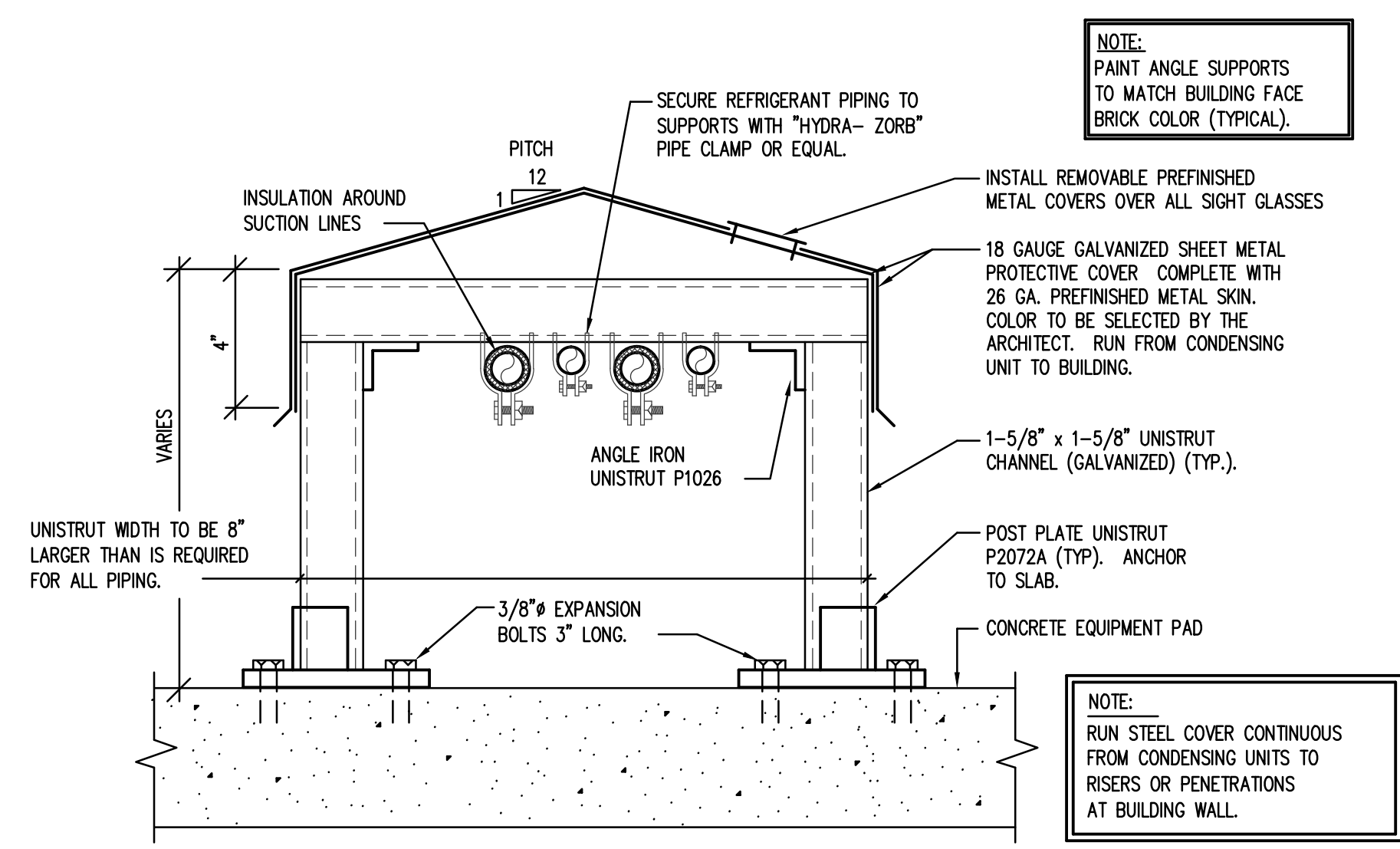
* REFER TO COMPRESSOR UNIT SCHEDULE ON SHEET M601 FOR SYSTEM SIZES.



C SUSPENDED REFRIGERANT PIPE SUPPORT AT CEILING
SCALE: NONE

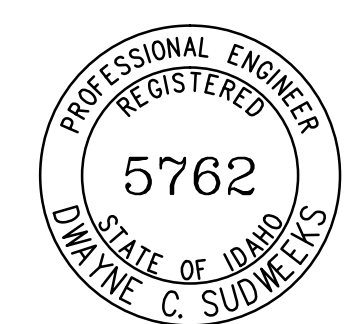


D REFRIGERANT PIPE SUPPORT AT WALL
SCALE: NONE



E EXTERIOR REFRIGERANT PIPE SUPPORT DETAIL
SCALE: NONE

ORIGINAL DRAWING SIGNED BY: DWAYNE C. SUDNEEKS
DATE ORIGINAL SIGNED: May 23, 2017
ORIGINAL ON FILE AT ENGINEERED SYSTEMS ASSOCIATES
1355 EAST CENTER, POCATELLO, IDAHO 83201



Engineered Systems Associates
1355 EAST CENTER
POCATELLO, IDAHO 83201
PHONE: (208) 233-0501
FAX: (208) 233-0529
EMAIL: esa@engsystems.com
ESA JOB NUMBER: 17031

Architect / Engineer:
GENE C. ULMER ARCHITECT
1506 S. SECRETARIAT WAY
Nampa, ID 83686
(208) 899-0874 • gculmerarch@aol.com

Date: May 23, 2017

Stamp:

Middleton Heritage 09T SC
Middleton Idaho Stake
1332 Cornell Street
Middleton, Idaho 83644

Project for:
THE CHURCH OF JESUS CHRIST OF LATTER-DAY SAINTS

Mark	Date	Drawn	Description

Project Number: 21701
Plan Series: HET-SCS-09-07
Property Number: 50034331601

Sheet Title:
MECHANICAL DETAILS

Sheet:

M501

17031-M501.dwg 05/22/2017 - 3:04 PM